

## 公司介绍 | Company Profile

新创碳谷碳纤维事业部致力于高性价比、高性能碳纤维的研发、生产和销售，主要产品有 12K、24K、25K、50K 碳纤维，首条碳化线于 2021 年正式投产。目前公司总产能 1.8 万吨 / 年。事业部拥有优秀的管理和研发团队，掌握碳纤维生产制造的关键技术，自主研发、设计了先进可靠的碳纤维生产线自动控制系统。

全球碳纤维及复合材料市场需求逐年增长，但碳纤维增强材料一直面临着成本和质量的挑战。基于此，新创碳谷前瞻性的进行全产业链布局，建立了完整可持续的材料供应链体系，加上研发设计、规模化生产和测试验证，新创碳谷整合产业链上所有环节，为客户提供高性价比以及高性能、轻量化的复合材料整体应用解决方案。

Carbon Fiber BU in NEWTECH GROUP is committed to the development, manufacturing and sales of cost-effective, high performance carbon fiber. Our main products now are 12K, 24K, 25K, 50K carbon fiber. The first carbonization line was officially put into operation in 2021. At present, the total capacity is 18,000 tons per year. We have excellent management and technical team, master the key technology of carbon fiber manufacturing. We designed the advanced and reliable carbon fiber production line automatic control system.

As a forward-looking company, NEWTECH GROUP made the layout of a whole industry chain, established a complete and sustainable material supply chain system, addition with R&D design, large-scale production and test verification. By integrating all aspects of the industrial chain, we provide customers with cost-effective, high-performance and lightweight composite application solutions.

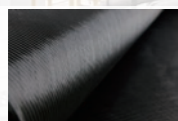
### 可持续的垂直材料供应链体系 Sustainable Vertical Supply Chain



聚丙烯腈 (PAN) 原丝  
Polyacrylonitrile (pan) base precursor



12K、24K、25K、50K 碳纤维  
12K, 24K, 25K, 50K carbon fiber



碳纤维织物、预浸料  
Carbon Fiber fabric, prepreg



各种工艺成型的复合材料产品  
Composite parts formed by various processes



复合材料整体解决方案  
Turnkey Composite Solution



新创碳谷集团有限公司  
NEWTECH GROUP CO., LTD

地址: 常州市新北区黄海路 329 号  
ADD: No. 329 Huanghai Road, Xinbei District,  
Changzhou, Jiangsu, China  
电话 /Tel: 0519-85651833  
邮箱 /E-mail: info@newtechgroupcn.com



New Tech, New Future

碳纤维及复合材料整体解决方案  
Carbon Fiber and Turnkey Composite Solution



新创碳谷集团有限公司  
NEWTECH GROUP CO., LTD



## 碳纤维主要型号及性能指标

### Carbon fiber Specifications and Performance Indicators

规格 Grade	丝数 Filament Count	丝重 Yield tex	拉伸强度 Tensile strength Ksi MPa	拉伸模量 Tensile Modulus Msi GPa	断裂伸长率 Elongation %	纤维直径 Filament Dia. micrometer	密度 Density g/cm <sup>3</sup>	
NTC4124-25K	25000	1600	609.2	4200	34.8	240	1.7	
NTC4224-50K	50000	3200	609.2	4200	34.8	240	1.8	
NTC4626-25K	25000	1600	681.7	4600	37.7	260	1.8	
NTC4626-50K	50000	3200	681.7	4600	37.7	260	1.8	
NTC4924-12K	12000	800	739.7	4900	37.7	240	2.0	
NTC4924-24K	24000	1650	739.7	4900	37.7	240	2.0	
NTC5125-12K	12000	800	768.7	5100	37.0	250	2.0	
NTC5125-24K	24000	1650	768.7	5100	36.3	250	2.0	
NTC5525-12K	12000	800	826.7	5500	42.05	250	2.1	
NTC5525-24K	24000	1650	826.7	5500	42.05	250	2.1	
NTC5929-12K	12000	450	870.2	5900	42.05	290	2.0	
NTC5929-24K	24000	900	870.2	5900	42.05	290	2.0	
上浆剂类型 Sizing Type			上浆量 Sizing content					
环氧 Epoxy			0.8%-1.5%					

\*注:本表所示数据为典型值,并非保证值。请与新创碳谷的销售团队联系,以获得准确的纤维选型。

The properties on this table are typical and not warranty value. It was obtained using certain controlled condition by NEWTECH. Please contact our sales team, for choosing the best product.

碳纤维属授权管制型商品。请进口商咨询所在国的进出口条例。

The export of carbon fiber can be subject to authorization. Each exporter is responsible to observe the regulations in his country.



## 热塑短切碳纤维产品介绍

为解决碳纤维复合材料难以回收的难题,我司成立了专项的碳纤维复合材料回收再利用部门,面向市场回收报废碳纤维纱线、织物及复合材料,为客户提供碳纤维废料的售后回收服务,解决客户报废物料难以处理的难题。同时通过回收再应用技术,提取回收物料中的碳纤维,对其进行表面处理及再成型,形成热塑短切碳纤维,为市场提供低成本、高性能的短切碳纤维。

### 圆柱状热塑短切碳纤维 / Cylindrical type chopped carbon fiber

#### ● 应用领域

汽车、无人机、电脑、乐器

#### ● Application

Cars, drones, computers, Musical Instruments

#### ● 主要功能

次承载、导电应用

#### ● Main function

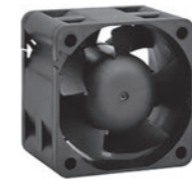
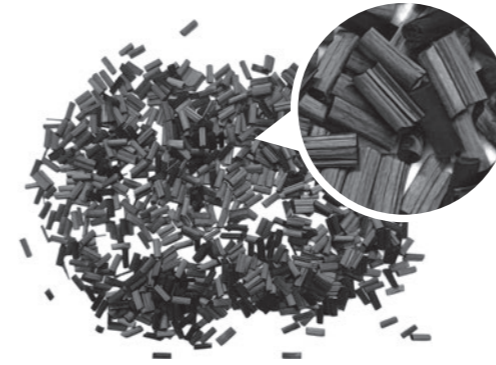
Secondary bearing, conductive applications

#### ● 主要制品

汽车空调出风扇、杂物箱、无人机外壳、电脑外壳、乐器面板

#### ● Main products

Car air conditioning fan, utility box, drone casing, computer casing, musical instrument panel



汽车出风扇  
Car air conditioning fan



汽车杂物箱  
Utility box



无人机外壳  
Drone casing



电脑外壳  
Computer casing



乐器面板  
Musical instrument panel

#### ● 产品简介 / Product introduction

产品规格 Product Specification	纱线原料 Raw material	上浆剂类型 Sizing agent type	备注 Remark
CTCCF-PA-6-A	新创碳谷 T400 纱线尾料 NEWTECH T400 leftover yarn	聚酰胺 Polyamide	上浆剂类型可根据需求更换 (PA/PU/EP) The type of sizing agent can be changed as required

#### ● 产品性能 / Product performance

检测项目 Test item	质量标准 Quality standard	测试标准 Test standard	实测平均值 Measured average value	备注 Remark
拉伸强度 (MPa) Tensile Strength	≥ 4200	GB/T3362-2017	4350	数据为原碳纤维性能测试值 Original carbon fiber parameter
拉伸模量 (GPa) Tensile Modulus	235-260	GB/T3362-2017	241	
断裂伸长率 (%) Elongation at break	≥ 1.5	GB/T3362-2017	1.89	
纤维长度 (mm) Fiber length	6±0.2	/	6	
堆积密度 (g/L) Bulk density	≥ 400	/	423	数据为短切碳纤维性能测试值 Short-cut carbon fiber parameter
上浆量 (%) Sizing content	5-7	GB/T26752-2020	6	

## INTRODUCTION TO THERMOPLASTIC CHOPPED CARBON FIBER PRODUCTS

In order to solve the difficult problem of recycling carbon fiber composite materials, our company has established a specific Carbon fiber Composite material recycling department. Market oriented recycling of scrap carbon fiber yarn, fabric and composite materials, to provide customers with after-sale recycling service of carbon fiber scrap, to solve customers' difficulties in disposing of scrap materials. At the same time, through the recycling and reapplication technology, the carbon fiber is extracted from the recycled materials, and the surface treatment and remolding are carried out to form the thermoplastic short-cut carbon fiber, so as to provide the market with low cost and high performance short-cut carbon fiber.

### 片状短切碳纤维 / Flake type chopped carbon fiber

#### ● 应用领域

汽车、雷达、电子电气、齿轮

#### ● Application

Automobile, radar, electronic and electrical, gear

#### ● 主要功能

导电应用、耐磨应用

#### ● Main function

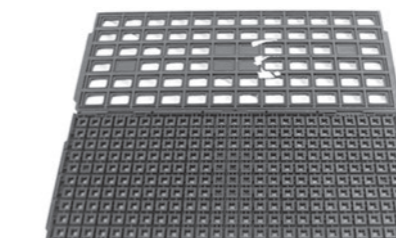
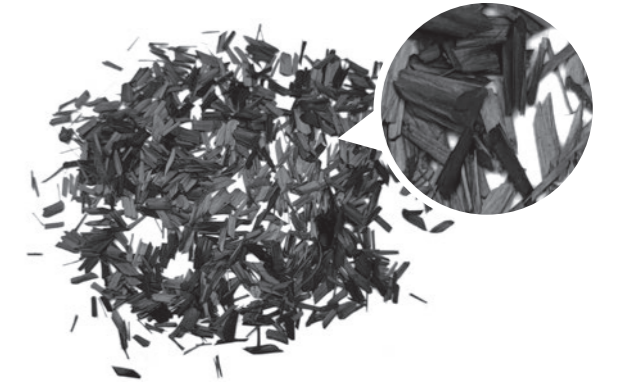
Conductive and wear-resistant

#### ● 主要制品

线路连接器、导电支架、防静电托盘、导电耐磨脚轮

#### ● Main products

Line connector, conductive bracket, anti-static tray, conductive wear-resistant casters



防静电耐高温 PPO 托盘  
Anti static and high temperature resistant PPO tray



碳纤维 PP 耐磨脚轮  
Carbon fiber PP wear-resistant casters



连接器  
Connector

#### ● 产品简介 / Product introduction

产品规格 Product Specification	纱线原料 Raw material	上浆剂类型 Sizing agent type	备注 Remark
FTCCF-PU-6-A	新创碳谷 T400 纱线尾料 NEWTECH T400 leftover yarn	聚氨酯 Polyurethane	上浆剂类型可根据需求更换 (PA/PU/EP) The type of sizing agent can be changed as required

#### ● 产品性能 / Product performance

检测项目 Test item	质量标准 Quality standard	测试标准 Test standard	实测平均值 Measured average value	备注 Remark
拉伸强度 (MPa) Tensile Strength	≥ 4100	GB/T3362-2017	4180	数据为原碳纤维性能测试值 Original carbon fiber parameter
拉伸模量 (GPa) Tensile Modulus	225-250	GB/T3362-2017	232	
断裂伸长率 (%) Elongation at break	≥ 1.5	GB/T3362-2017	1.82	
纤维长度 (mm) Fiber length	6±0.2	/	6	
堆积密度 (g/L) Bulk density	≥ 400	/	417	数据为短切碳纤维性能测试值 Short-cut carbon fiber parameter
上浆量 (%) Sizing content	1-3	GB/T26752-2020	1.9	